

Data Repositories and Management Information

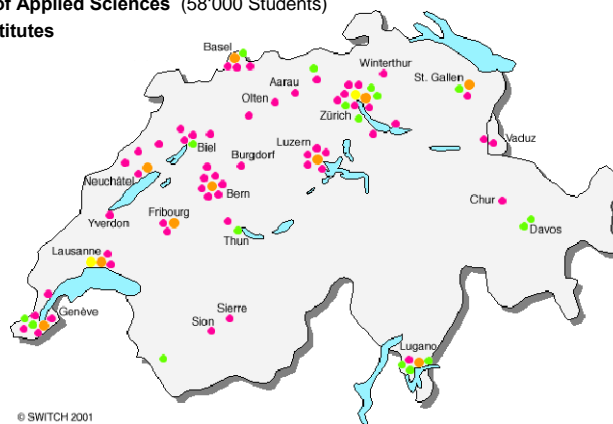
Urs Hugentobler
Controlling / Institutional Research, ETH Zurich

SIG on exploiting data repositories

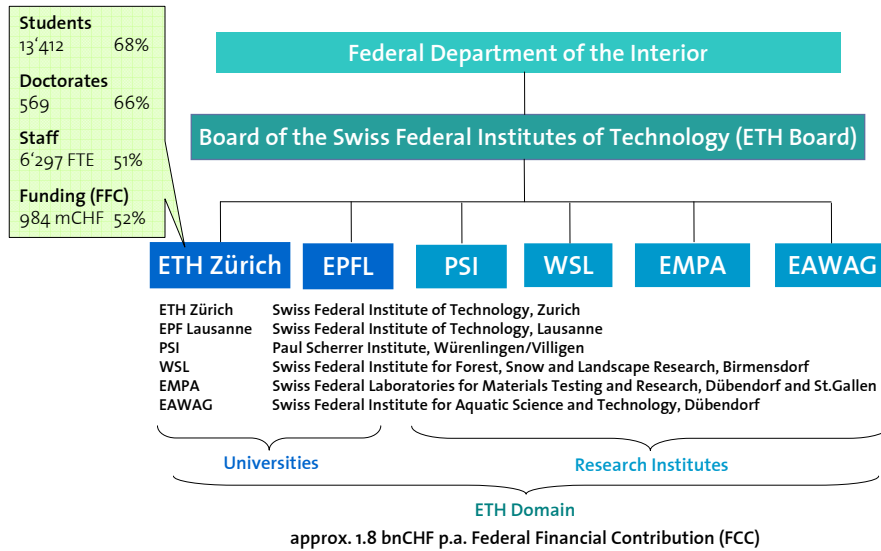
29th Annual EAIR Forum Innsbruck
August 26-29, 2007

Higher Education in Switzerland

- Federal ETH's (19'500 Students as of 2006)
- Cantonal **Universities** (95'500 Students)
- **Universities of Applied Sciences** (58'000 Students)
- **Research Institutes**



ETH Zurich as a 'Federal University' and part of the ETH Domain

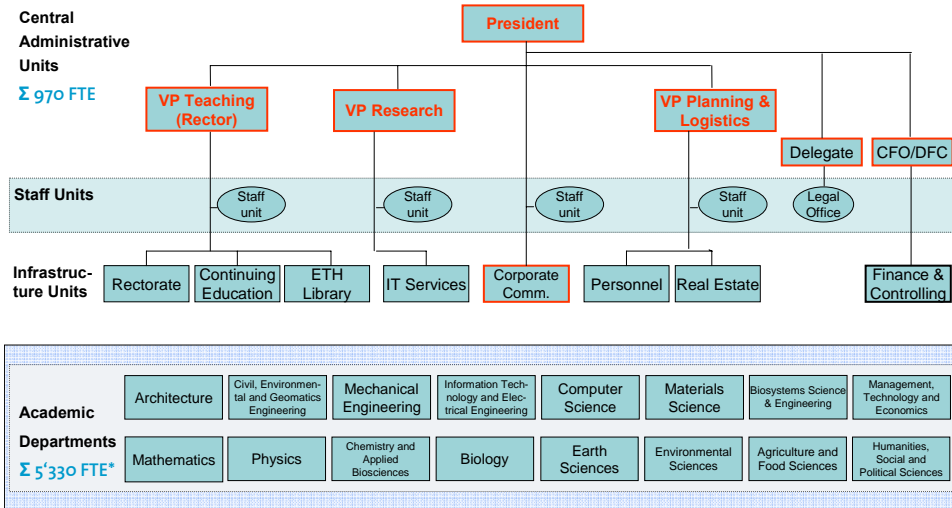


Key Figures ETH Zurich (2006)

Diploma, Bachelor- and Master Students	10'223
w/o international	1'473 (14%)
Degrees awarded (Diploma, Master)	1'222
Doctoral Students	2'794
w/o international	1'582 (56%)
Degrees awarded (PhD)	569
Professors (FTE)	359
w/o international	219 (61%)
w/o Assistant Professors	50
Staff (FTE)	5'938
w/o international (scientific staff)	2'132 (56%)
Budget (total expenditure)	1'173 mCHF
w/o third-party funding	184 (16%)

Organisational Structure

Σ Staff: 6'300 FTE (31.12.2006)



* Incl. scientific centers/user labs and interdisciplinary projects

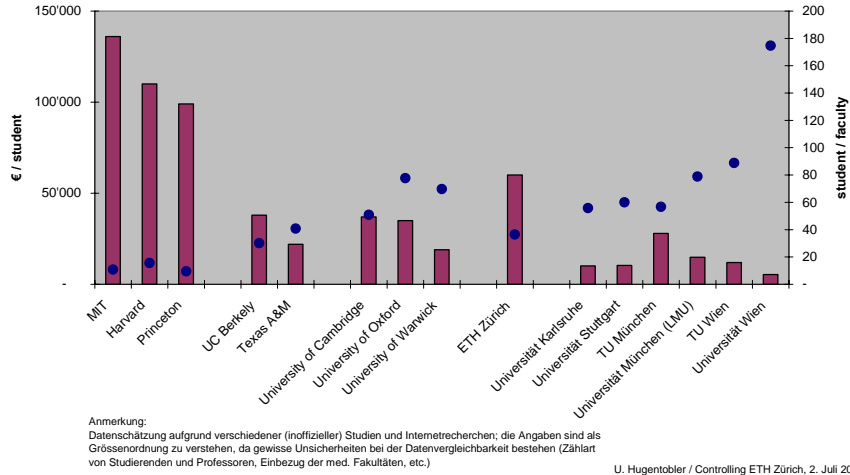
Publicly available data repositories

- How reliable and how updated?
- How helpful to be used in management information?

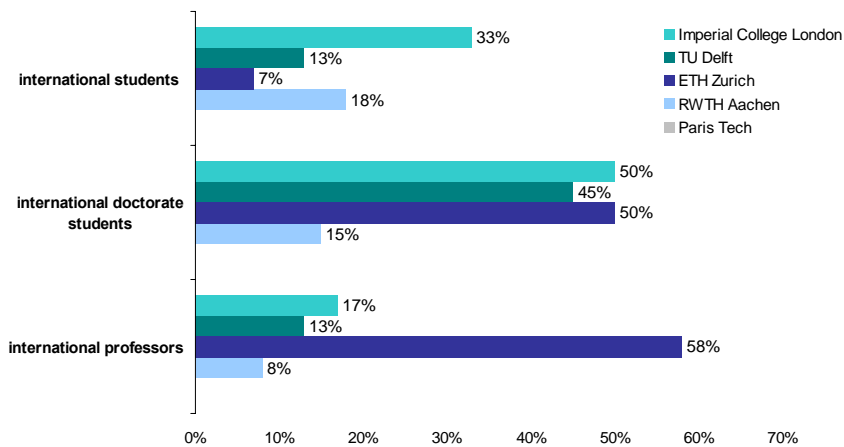
➤ Some examples

Funding per student and student / faculty ratio

Estimate of overall funding (incl. third party) per student in comparison with student / faculty ratio

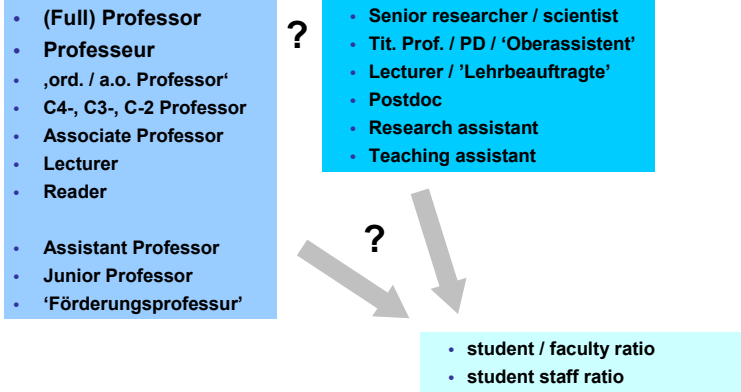


IDEA League - International culture





Faculty vs Academic / research / scientific staff



Bachelor-, Master-, PhD-students ? ‘class size’ ?
 support by academics (holding a PhD) or by teaching / research assistants ?



Example for student / faculty ratio – THES Ranking

Ranks of ETH Zurich

	2006	2005	2004
Overall rank	24	21	10
<i>Rank per indicator (weight 2005)</i>			
Peer review score (40%)	30	26	25
Recruiter's view (10%)	99	80	-
International faculty score (5%)	4	2	5
International student score (5%)	20	25	46
Faculty / student score (20%)	70	10	131
Citation / faculty score (20%)	24	71	3

Bibliometrics – highly cited researchers

(used as indicator among others in the Shanghai Ranking)

Highly cited researchers at ETH Zürich

Name	Institution
Apel, Klaus	ETH Zurich
Bailey, James E.	
Batlogg, Bertram	ETH Zurich
Bonani, Georges	ETH Zurich
Diederich, François	ETH Zurich
Ernst, Richard R.	ETH Zurich
Fiechter, Armin	ETH Zurich
Giger, Walter	EAWAG
Grab, Christoph	ETH Zurich
Guger, Willi	ETH Zurich
Halliday, Alexander N.	ETH Zurich
Helenius, Ari Henrik	ETH Zurich
Hengartner, Hans	Institute of Experimental Immunology
Hoigné, Jürg	ETH Zurich
Morari, Manfred	ETH Zurich
Möhler, Hanns	University of Zurich
Ott, Hans Rudolf	ETH Zurich
Parrinello, Michele	ETH Zurich
Rice, T. Maurice	ETH Zurich
Salamon, Dietmar A.	ETH Zurich
Schwab, Martin E.	University of Zurich and ETH Zurich
Schwarzenbach, René P.	Vorsteher Institut für Gewässerschutz und Wassertechnologie
Seebach, Dieter	ETH Zurich
Struwe, Michael	ETH Zurich
Thompson, Alan B.	ETH Zurich
Wüthrich, Kurt	ETH Zurich
Zehnder, Alexander Jakob Boris	ETH Zurich

NOTE: Being acknowledged by Thomson Scientific as a highly cited researcher means that an individual is among the 250 most cited researchers within a specific field. The dataset used for analysis comprises all articles indexed in the Thomson Scientific Citation Databases and their citations in a 20-year time period. The list of highly cited researchers is regularly expanded; highly cited researchers will never be removed from the list.

SOURCE: Thomson Scientific, ISI HighlyCited.com (2006-05-09)

Concluding remarks

- Many data repositories are of limited use for enhancing management information
- A comparison of a few selected institutions (peer institutions) leads to a more detailed and accurate picture

➤ *Where are useful data repositories at European / international level to be found?*